

# Images of The Human Skull: Outer, Middle and Inner Ear Anatomy Part One: Outer & Middle Ear

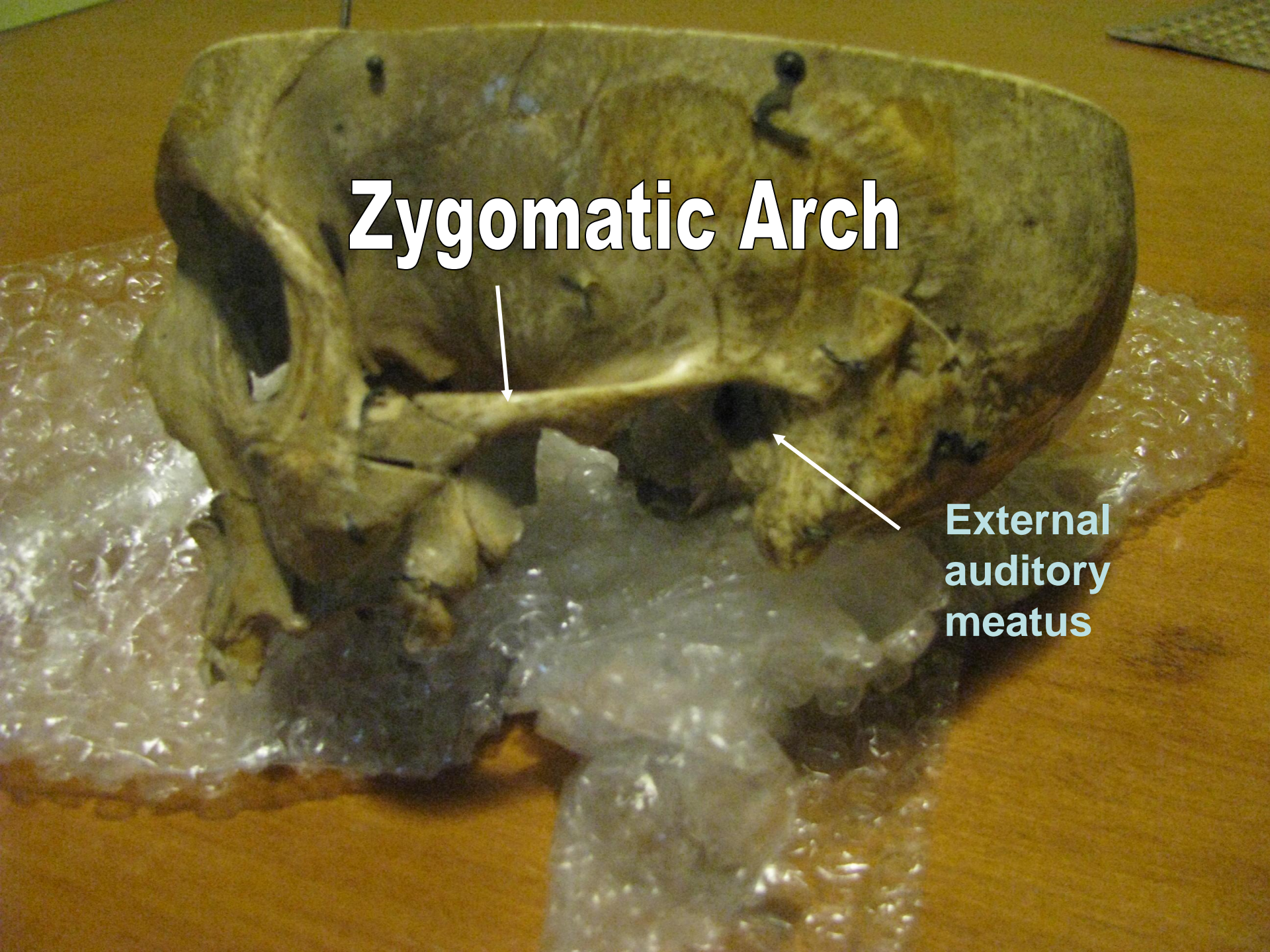
Skull and temporal bone donated by  
Dr Chuck Berlin to  
Nova Southeastern University

Presentation by Teri Hamill, PhD



**Zygomatic Arch**

**External  
auditory  
meatus**



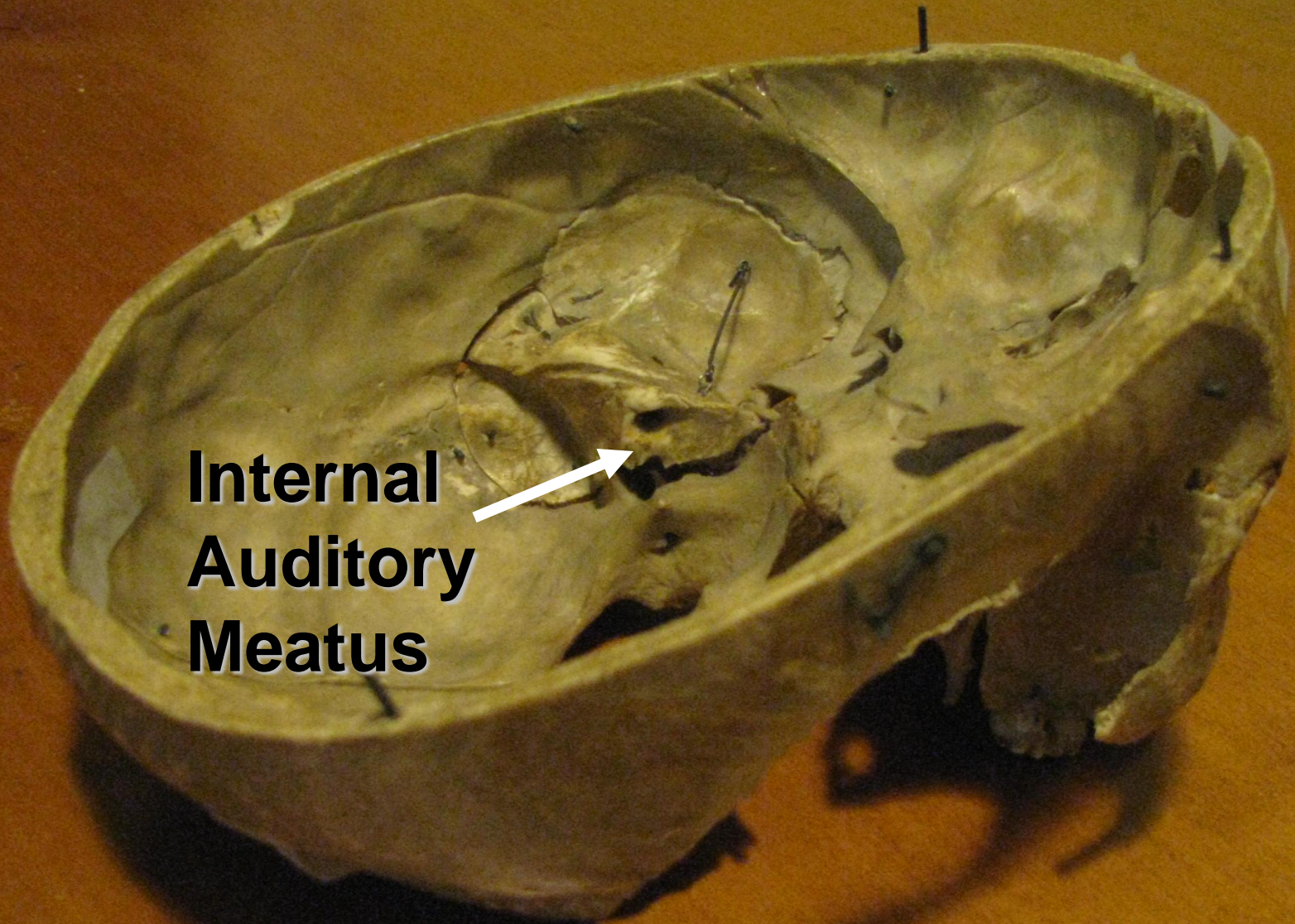


The inside  
of the  
skull.

The  
temporal  
bone has  
been  
dissected  
for  
removal



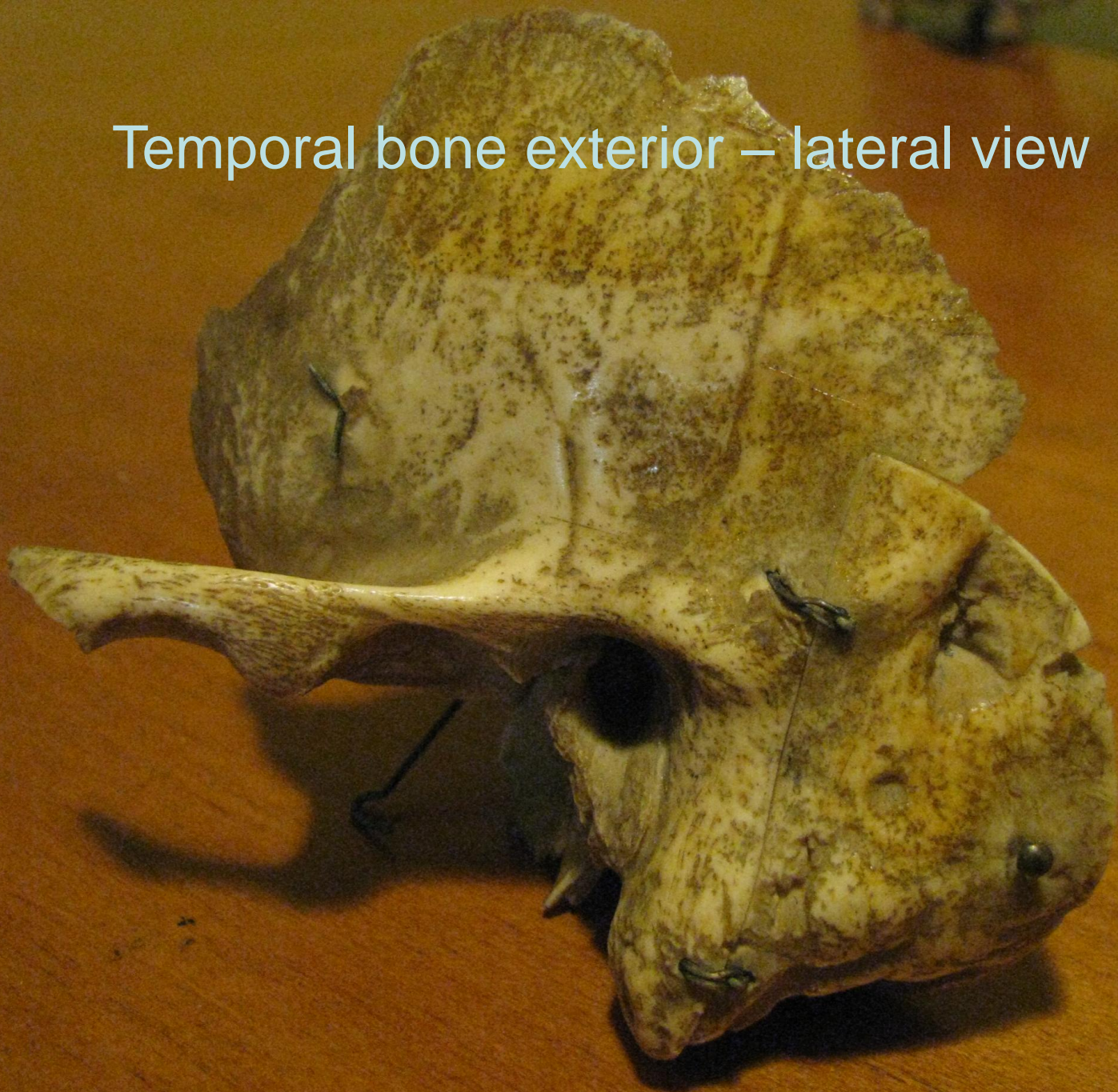
**Internal  
Auditory  
Meatus**







Temporal bone exterior – lateral view



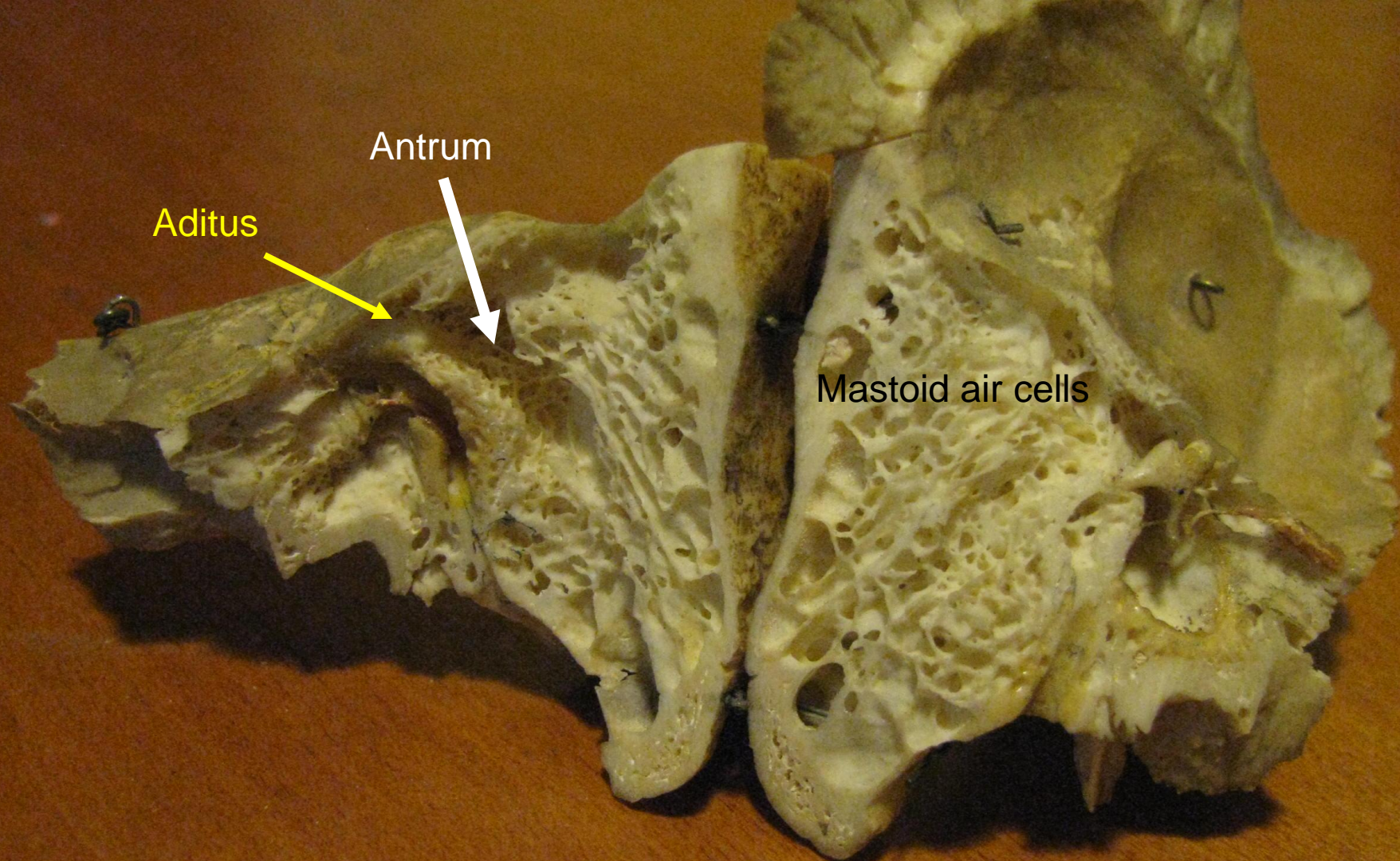


Rotating...





The temporal bone has been sectioned so that the middle ear can be seen.



Antrum

Aditus

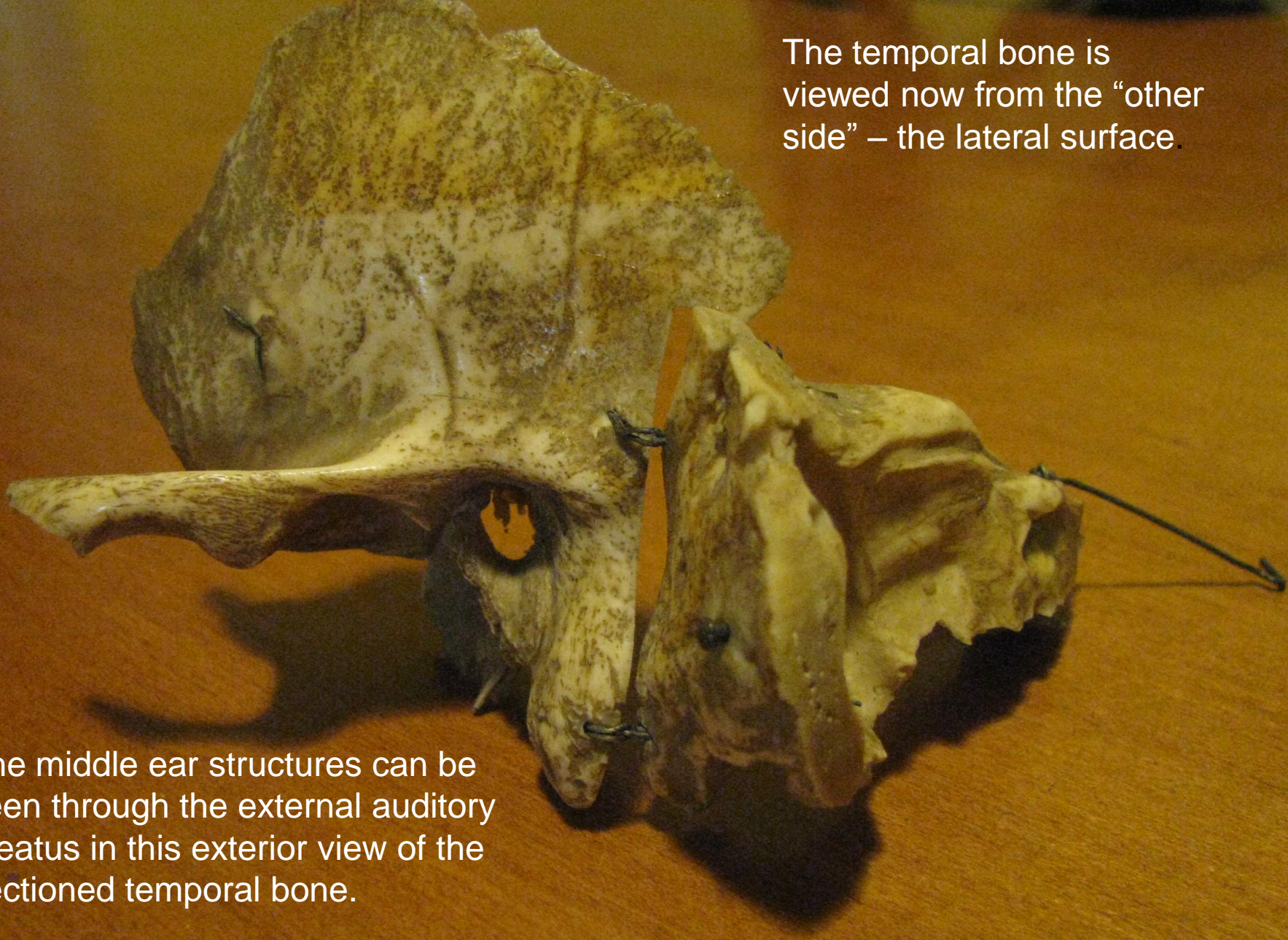
Mastoid air cells

Posterior section of the middle ear

Anterior section

The temporal bone is viewed now from the “other side” – the lateral surface.

The middle ear structures can be seen through the external auditory meatus in this exterior view of the sectioned temporal bone.





Looking out through the middle ear to the external ear.





INCUS

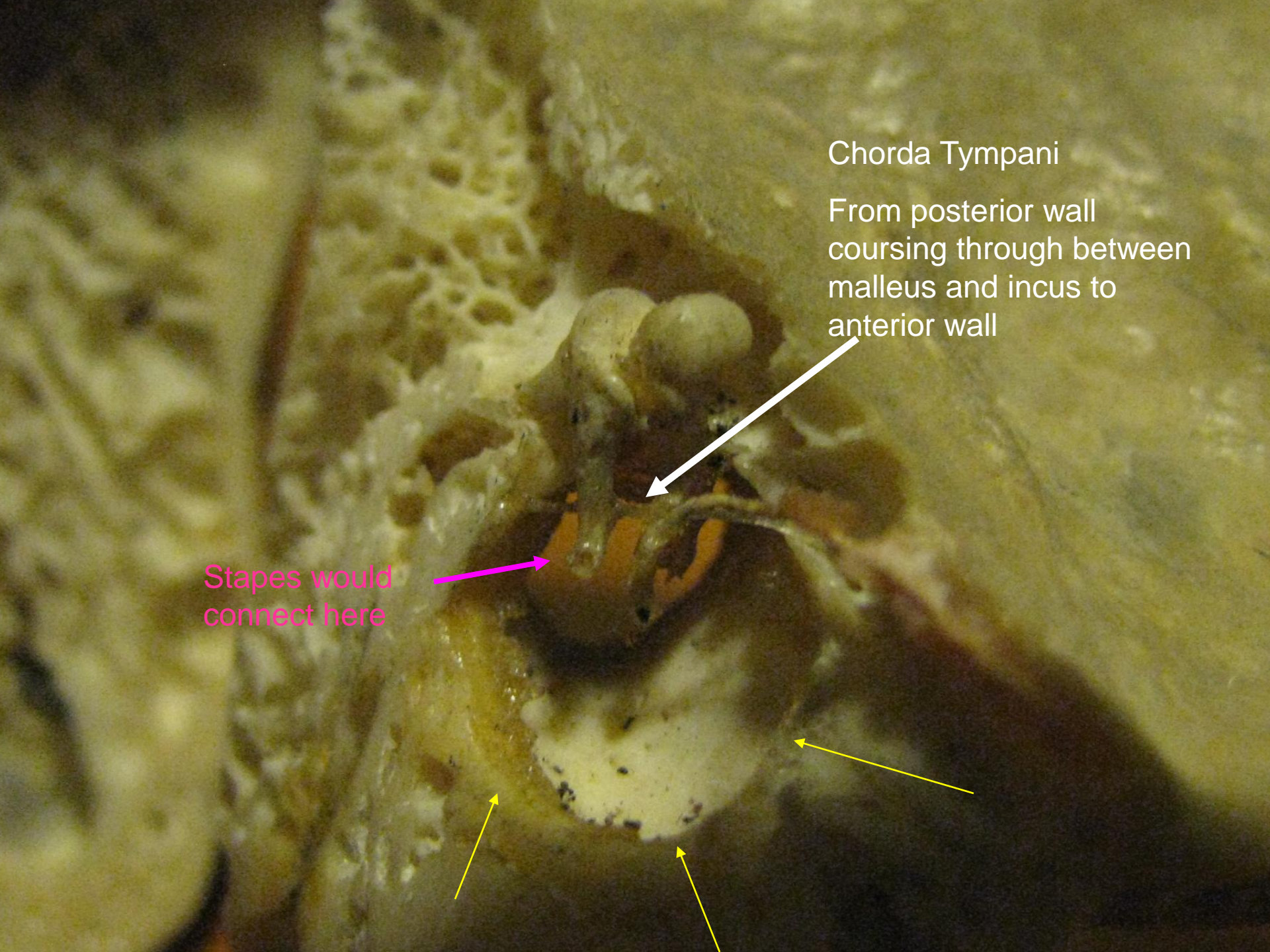
MALLEUS



Chorda Tympani

From posterior wall  
coursing through between  
malleus and incus to  
anterior wall

Stapes would  
connect here



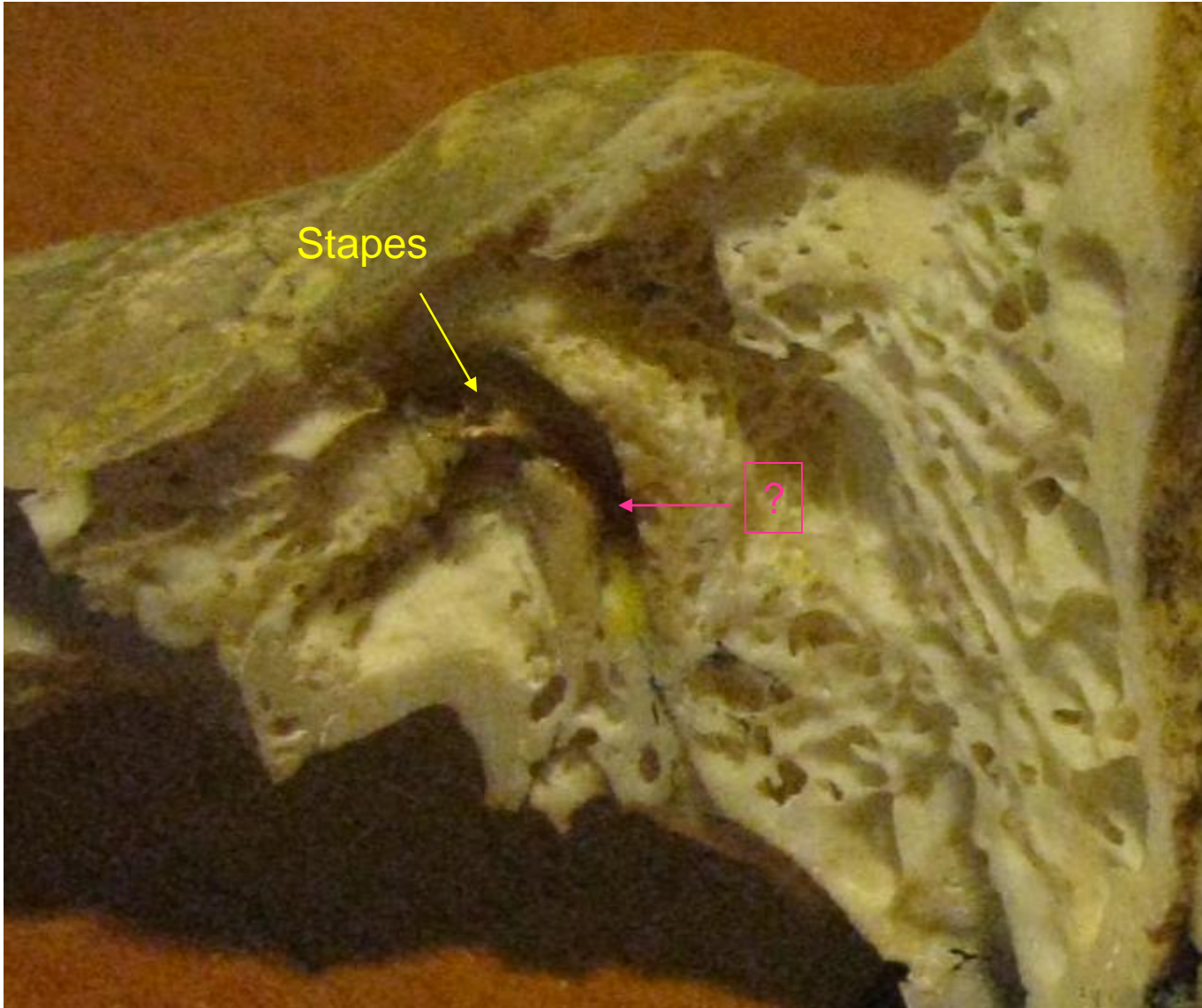




SHORT PROCESS OF INCUS

The image shows a lateral view of the middle ear bones. The incus is the central bone, with its short process extending upwards and its long process extending downwards. The long process is shown articulating with the head of the stapes. The surrounding structures, including the ossicles and the bony walls of the middle ear, are visible. A hand is holding the dissection on the left side.

LONG PROCESS OF  
THE INCUS

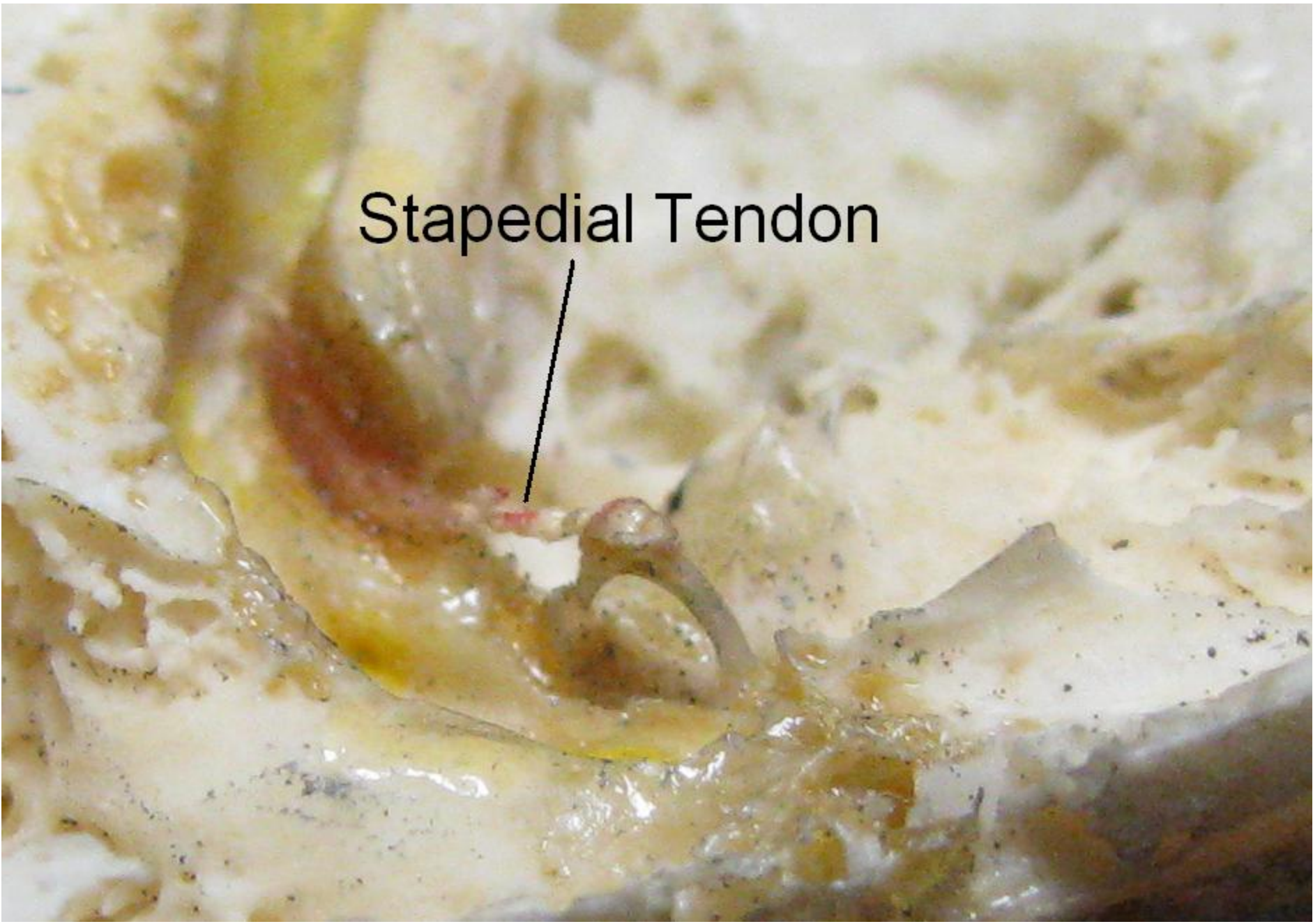


Posterior surface is to the right, so probably not ET, maybe canal of VII??



Viewed from above. Posterior is left.

Stapedial Tendon





This is more likely Eustachian tube

# The End

(of part 1)